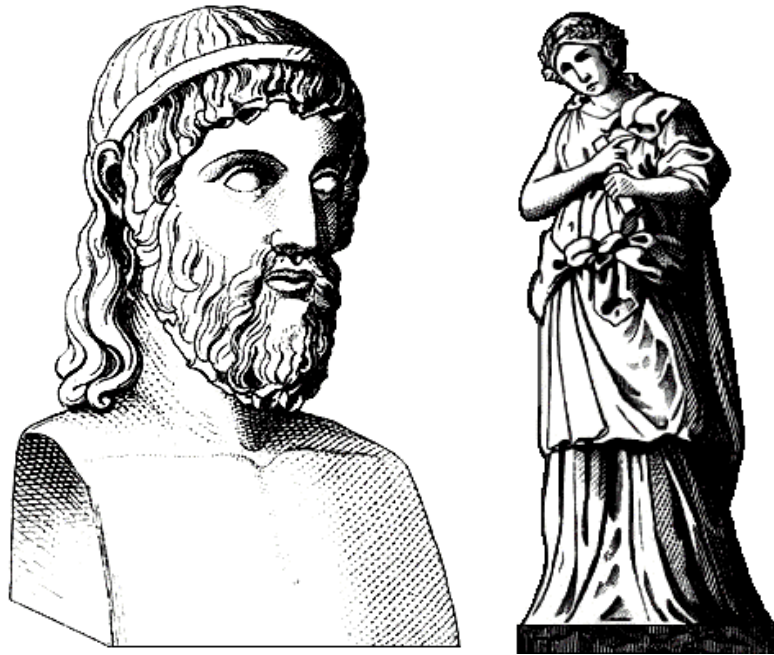


ART

A _____ is a picture made out of many small colored tiles.

An artistic imitation of someone made of stone is called a
_____.



PHILOSOPHY

Define Stoicism.



LANGUAGE

List the language used by Rome. Use a complete sentence to answer the question.

List the five European languages that are based on this language.

“Sero in periculis est consillium quarere.”

“**Ad infinitum**” – *To infinity without end*

“**Alias**” – *Otherwise*

“**Ave maria**” – *Hail Mary*

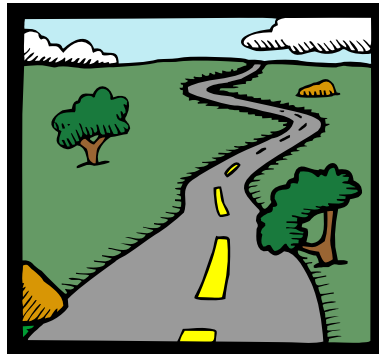
ARCHITECTURE

List the three most common uses of the Roman arch.



ENGINEERING

Roman _____ assisted with Roman expansion.



GOV'T & LAW

Perhaps Rome's most lasting and widespread contribution was its system of _____, and representative _____. Roman law stressed _____ & _____.



CHRISTIANITY

In one sentence, explain how Christianity helped lead to the end of the Roman Empire.

